

7” USB Monitor EB-7DM Manual



CONTENTS

1.	Safety Instructions.....
2.	Product Features.....
3.	connections and Installation.....
4.	Installation Monitor Driver.....
5.	EB-7DM Display Setting.....
6.	System Requirements.....
7.	Specifications.....
8.	Accessories.....
9.	troubleshooting.....

1. Safety Instructions

These safety instructions must be followed to ensure your safety and prevent property damage.

Warning/Cautions Otherwise, it may result in personal injury or property damage.

Make sure to read the instructions carefully and use the product in the correct manner.

1. Power Source:

-Make sure to use USB Cable (DC 5v, 500mA) only.

EB-7DM doesn't require any additional power source

2. Do not place EB-7DM in a location exposed to moisture, dust, smoke, water, or in a car.

Otherwise, this may result in electric shock or fire.

3. Clean the product using a soft cloth with a monitor cleaner only.

-Make sure to disconnect USB Cable while cleaning

-Ensure that water does not enter the product and that it is not wet.

Otherwise, this may result in electric shock, fire or a malfunction.

1. Do not force on LCD Screen

-Do not tap or scratch LCD Screen with a sharp object ,
otherwise, LCD may get damage.

2. Product Input/Output Connectors

-Do not insert any metal, such as chopsticks, coins, pins and steel.

-If foreign material enters the product, disconnect the USB cable and contact a Service Center.

3. Do not install EB-7DM in an unstable location.

-Otherwise, it may fall and cause personal injury and/or damage the product.

vii. Ensure that users do not disassemble, repair or modify the product themselves.

-If the product needs to be repaired, contact a Service Center.

If water enters the product, disconnect the USB and contact a Service Center. This may result in a product malfunction, electric shock, or fire.

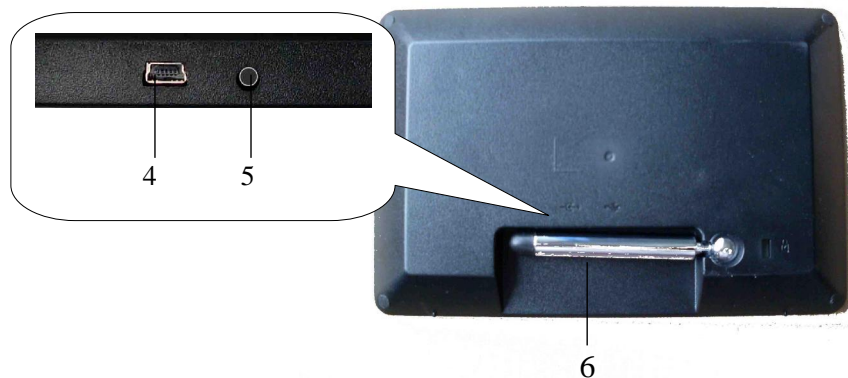
2. Product Features

EB-7DM with only USB cable connection, a user may utilize EB-7DM as Multiple Input/output device for Video Conference, Instant Messaging, News and Stock casting.

The model has function and feature

Picture





1. Brightness up
2. Brightness down
3. POWER : ON/OFF (light twinkling then start up)
4. USB Port
5. NO use
6. Bracket

3. Connections and Installation

1. EB-7DM requires USB connection only.

§ Emergency Power input: EB-7DM doesn't require any additional power source except USB. Emergency Power input is for Factory or Technical Service purpose only.

§ USB (mini B type) input: Using provided USB cable, connect your EB-7DM with PC

2. System Requirements

§ CPU: Intel Pentium/Celeron/AMD/K6/Athlon/Duron 1.2GHz or above

§ RAM: 512MB RAM or above

§ USB: at least one or more USB2.0 port

§ HDD: 30MB HDD space above

§ O/S: Windows 2000 SP4/XP SP2 32bit/Vista 32bit

3. Using the Software

With only USB cable connection, a user may operate EB-7DM as Extension monitor

4. Installing monitor driver (Auto Run)

1. Insert the CD into the CD-ROM drive

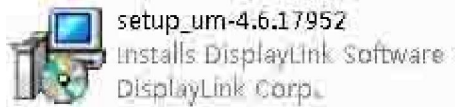
-Please make sure that your EB-7DM is connected to the PC

2. Installation takes about 1 minute.

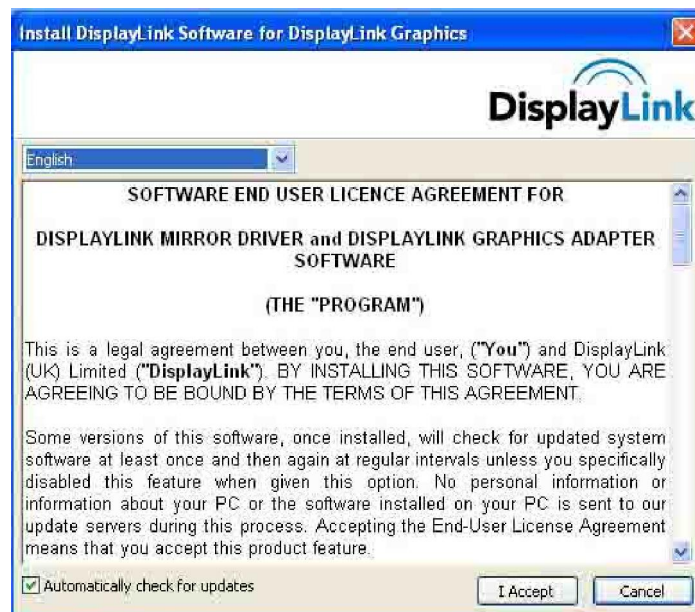
-Do not power off or disconnect the USB cable until installation is completely finished. This may damage systems or may cause system errors.

-The EB-7DM screen resolution is fixed for the best picture quality with each model.

1. Double click the icon



2. If you see following message window, select “I agree” to accept the terms of use



3. When the installation is complete, the EB-7DM setting icon appears on your system tray and the connected USB monitor information will pop-up.



4. After finish installation of the EB-7DM driver, please follow below steps for multi-monitor setting. (Microsoft® Windows® XP Operating System)

- § Right-click on icon on taskbar then click “Display Properties”
- § Choose ‘Setting’ then you may see connected monitors
- § Align the monitors displayed in [Display Properties] as the same as actual monitor usage.
- § Click ‘OK’ to confirm.

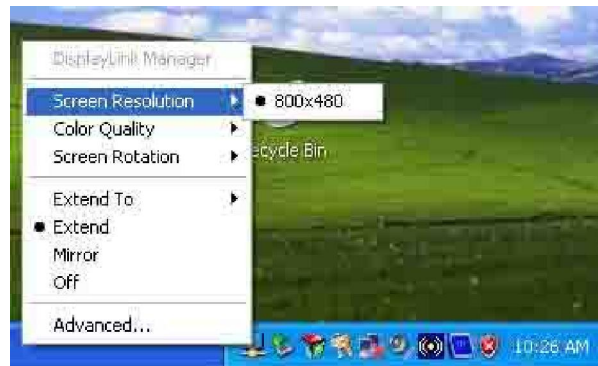


5. EB-7DM display setting

1. When the EB-7DM driver installation is complete, the EB-7DM setting icon appears on your system tray.



2. Click-on EB-7DM icon then you may see the EB-7DM setup menu for Screen Resolution, Colors, Rotation, Extension and etc.



6. System Requirements & Restrictions

1. Operating Systems

§ Windows XP

- Service Pack 1 prior: Not supported
- Service Pack 2 or after: Supported

§ Windows 2000

- Service Pack 3 prior: Not supported
- Service Pack 4 or after : supported

§ Windows Server 2003: Not supported

§ Windows vista: Supported except 64bit systems

User may check the Operating System version by Right-click 'My Computer' 'Properties' 'System Properties'

2. EB-7DM is a USB monitor to be recognized as a Generic USB device. Therefore system boot-up screen or DOS screen cannot be displayed properly.

3. Any software that requires Hardware 3D accelerator cannot be displayed properly with USB monitor. Such as below.

- Real Player(Expansion Mode)
- 3D Graphic Games
- Programs based on Direct X graphic engine

4. If the PC doesn't support USB2.0 EB-7DM may not operate properly.

5. If the systems' Graphic card doesn't support WDDM(Windows Display Driver Model), the USM monitor's extension mode may not work properly with Windows vista System.

7. Specifications

Model Name	EB-7DM
Screen Resolution	WVGA (800×480)
Contrast	250:1
Brightness	350cd/m ²
Aspect Ratio	16:9
Input Power	USB (DC 5V)
Power Consumption	2W-4.5W
Dimension (LWH)	188×123×23.5 mm
Weight	288g

8. Accessories



1. USB cable 1piece
2. CD drive 1piece
3. Manual 1piece

9. Troubles shooting

Before calling for assistance, please read carefully below. If you do need assistance, please call local service center or contact your desler.

Q: No image on screen, I cannot turn on the EB-7DM

A: Is USB cable connected and did you install EB-7DM driver yet? Please run 'EB-7DM Installation Software' in the CD. For more detail about driver installation, please refer to **III. Connections & Installation.**

Q: I cannot turn my EB-7DM screen on.

A: Please check if the USB cable is connected

Touch the EB-7DM's power button once then check the screen status.

Please check if 'EB-7DM Installation Software' has been installed properly

1. Right-click 'My Computer'.
2. Click 'Device Manager's at 'Hardware' tab
3. Locate the cursor on PC at the top of the system tree.
4. Click 'Action(A) ' "Add Hardware(A)".
5. Reboot the PC,

* Normal PC recognizes EB-7DM as a generic USB device. Frequent power on and off of the device may cause USB device error. Please refer to Microsoft customer support for USB devices troubleshooting.

Q: I cannot boot my system after connecting EB-7DM.

A: in case i851 chipset once – Board Type PC system, please disable ‘Legacy USB support’ option in system.

- BIOS setup method may differ from PC to PC, please refer to the User manual of the PC. Please refer to Microsoft homepage for more detail.

-

Q: I cannot see DOS opening screen with EB-7DM when my PC is booting up.

A: EB-7DM is using USB device. Since DOS doesn’t recognize USB Device while booting –up, EB-7DM cannot get video signal from the system.

Q: I cannot run 3D graphic game with EB-7DM screen.

A: EB-7DM is using USB 2.0 interface (480Mbps) for video data transfer. Therefore any program that requires 3D high speed graphic acceleration cannot be displayed properly.

- Restricted Programs.
 1. Real Player (Doesn’t support Extension Mode)
 2. 3d Graphic Games
 3. Programs that requires Direct X graphic acceleration
 4. Power DVD
 5. Win DVD (Version 5 or later)
- Supported Multimedia Players
 1. Windows Media Player (Version 10 or later)
 2. GOM Player
 3. KM Player

Q: How to uninstall “EB-7DM installation software”

A: ‘Control Panel’ ‘Program Add/Remove’ ‘Displaylink Core software’
Click ‘remove’.

Q: How many EB-7DM can be connected to one PC?

A: EB-7DM is a generic USB device. Theoretically a PC can recognize up to 127 USB device. However with the latest PC system, we recommend number of USB monitors and each respective PC system requirements as below.

1. 1 ~ 2 EB-7DM connections -1.2GHz CPU/512 MB Memory
2. 3 ~ 5 EB-7DM connections -1.8GHz CPU/1GB Memory
3. 6 EB-7DM connections -1.6GHz Dual core CPU/1GB Memory

* Display response rates on each a USB monitor may vary upon the PC’s resource management status.

Q: EB-7DM information remains in my ‘Display Properties’ even after disconnect or power off the EB-7DM.

A: The deactivated USB information implies power off or disconnected USB monitor status. To delete the deactivated monitor information, please uninstall ‘Displaylink Core software’ driver. Once the driver is uninstalled, you may not use EB-7DM. To



use EB-7DM again please re-install the driver.

Q: How can I clean the outer case/LCD Panel?

A: Disconnect the USB cable and then clean the EB-7DM with a soft cloth, using either a cleaning solution or plain water.

Do not leave any detergent or scratches on the case. Do not let any water enter the monitor.

Q: I lost EB-7DM installation disc. Where can I get an additional installation disc?

A: the installation software can be downloaded at www.lilliput.com.cn.

Q: When EB-7DM connected with PC first, after PC starts, EB-7DM is standby and no display?

A: Plug-out and plug in again with the USB cable between PC and EB-7DM; or press "POWER" button on EB-7DM to off, and then power on.